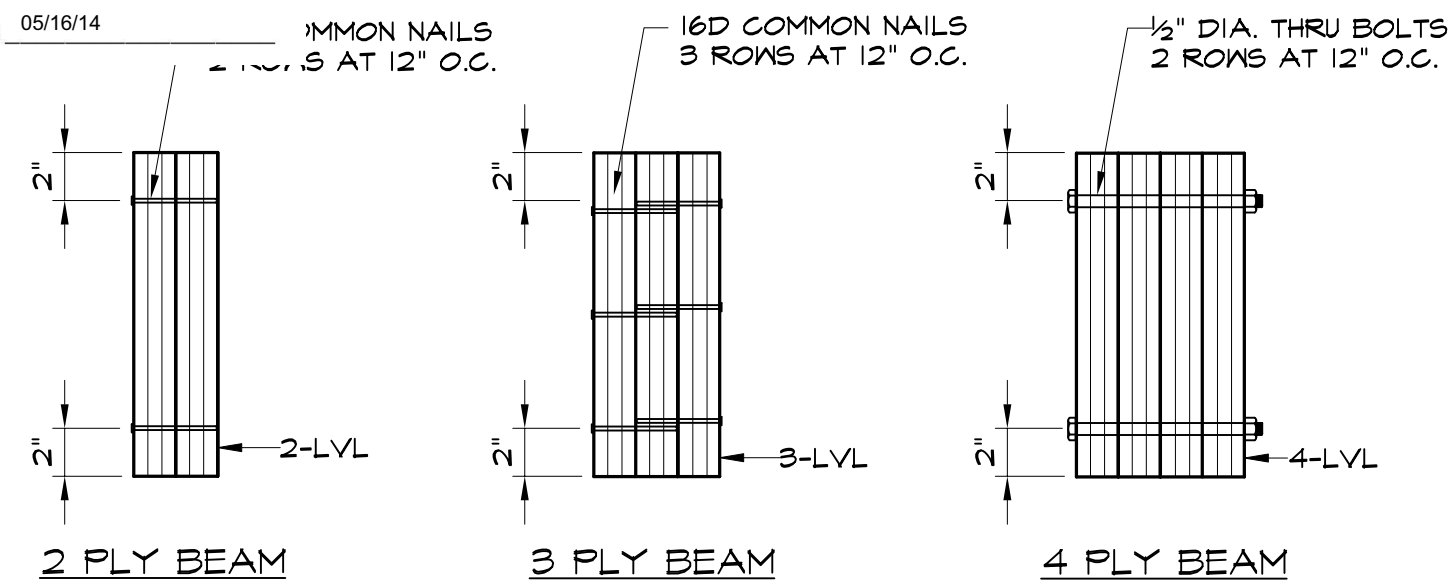


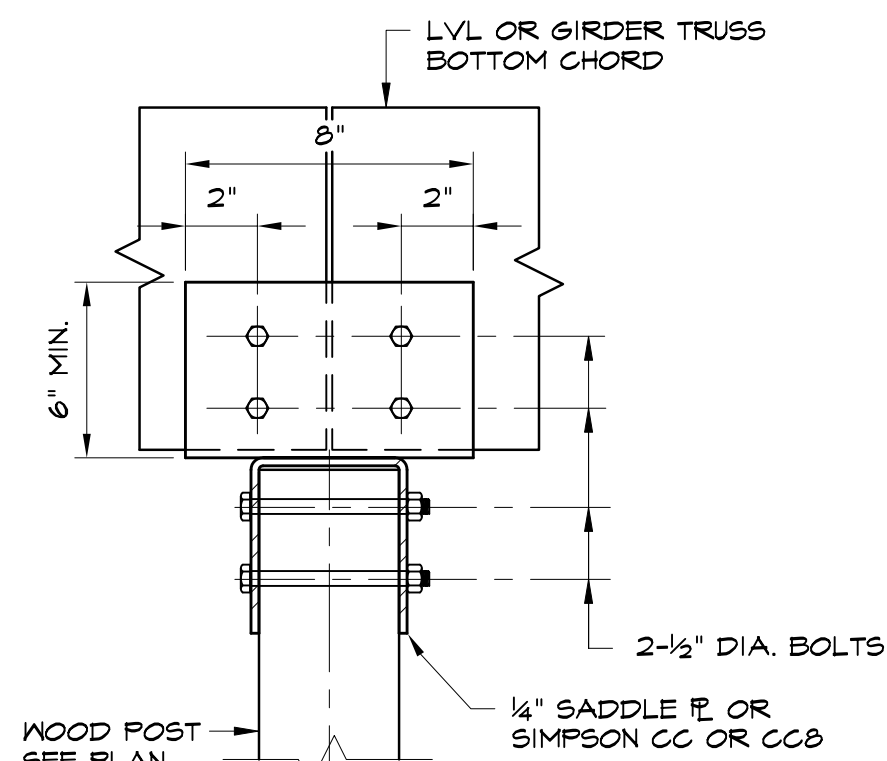


Date: 05/16/14

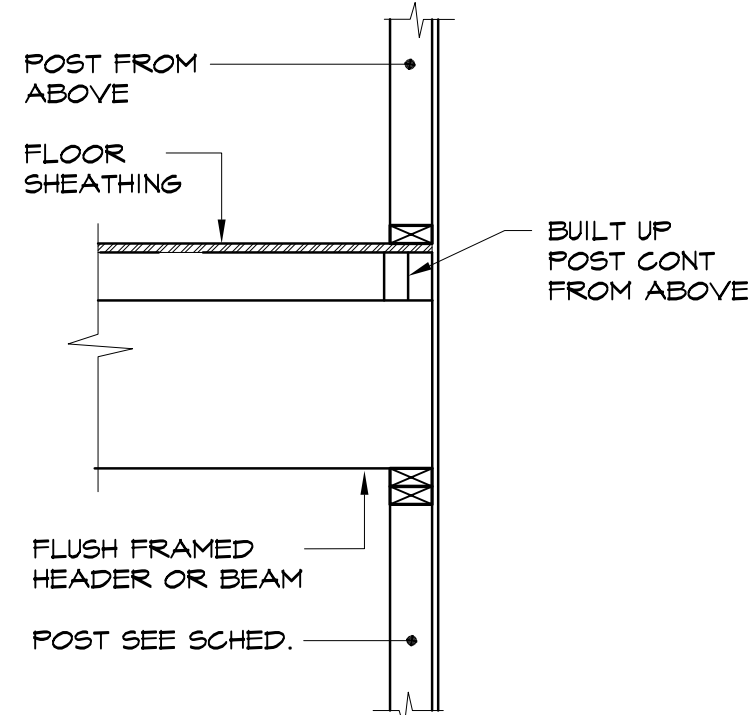
Reviewed for Code Compliance
Inspection Division
Approved with Conditions



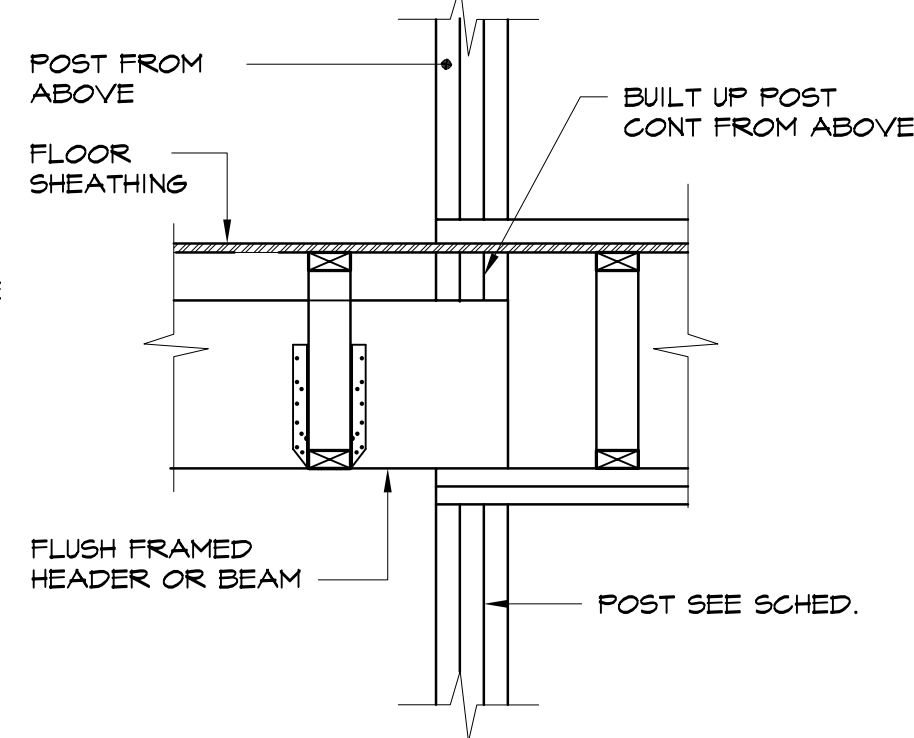
TYPICAL MULTIPLE PLY LVL BEAM DETAIL



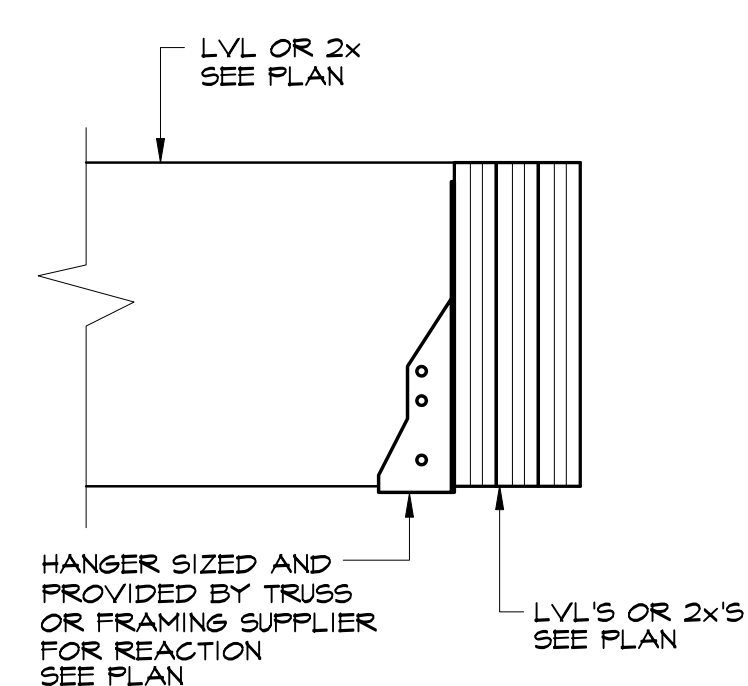
TYPICAL WOOD POST TO
LVL/GIRDER TRUSS DETAIL



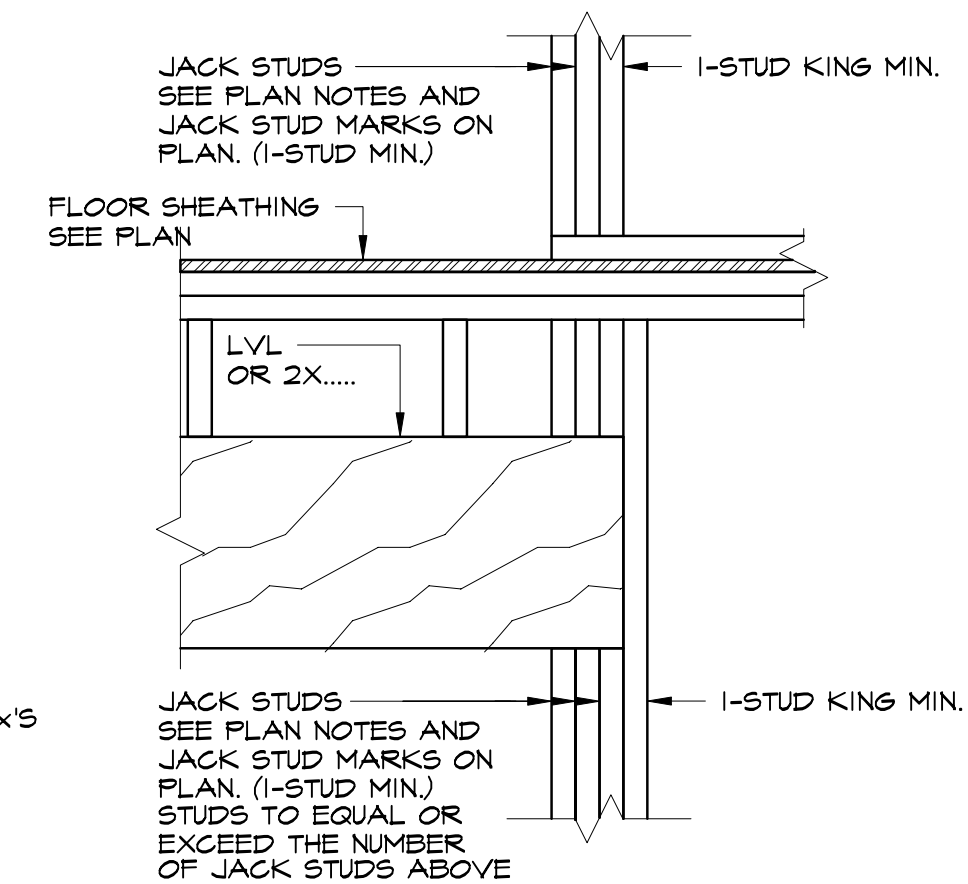
POST IN WALL



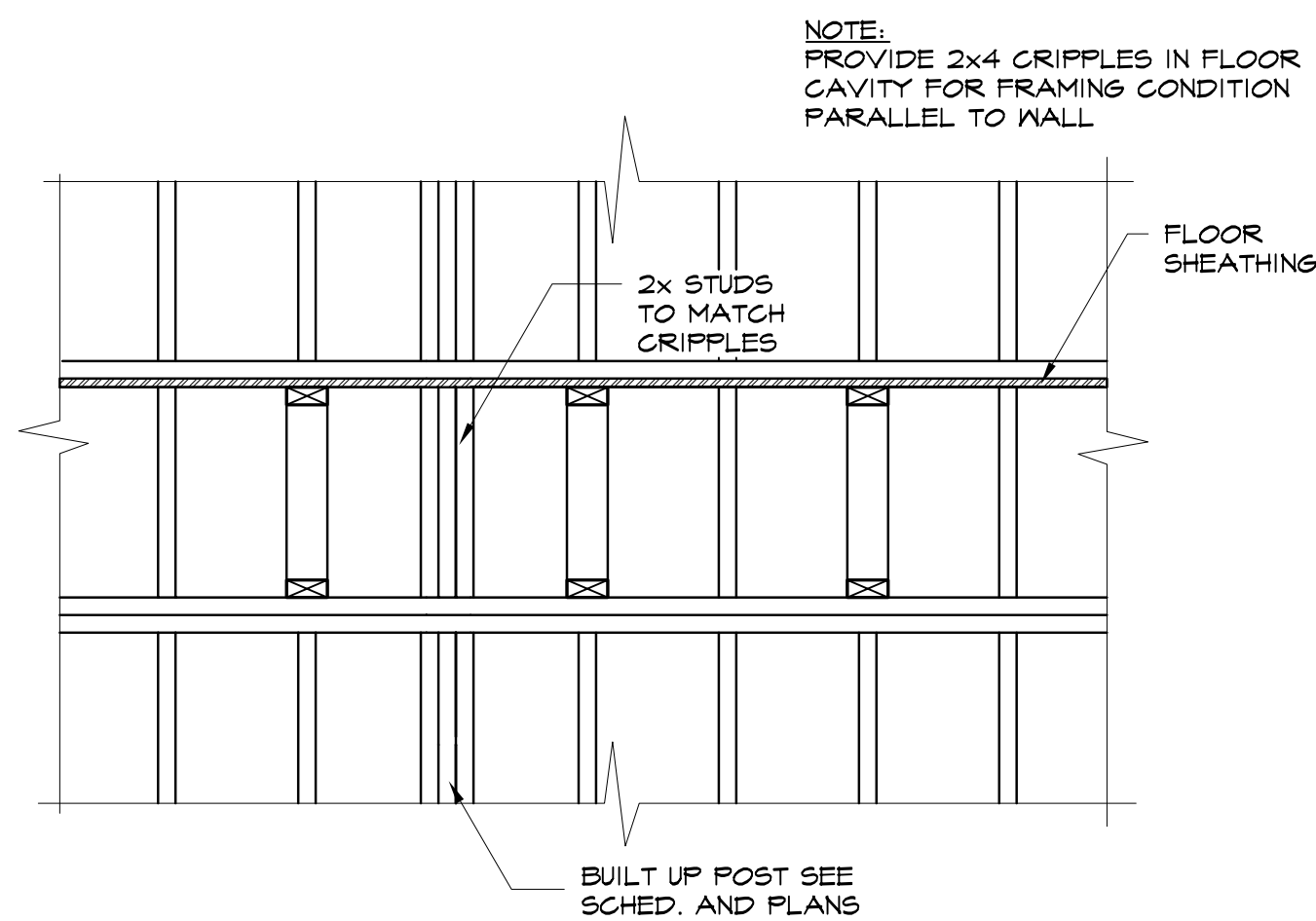
POST AT END OF WALL



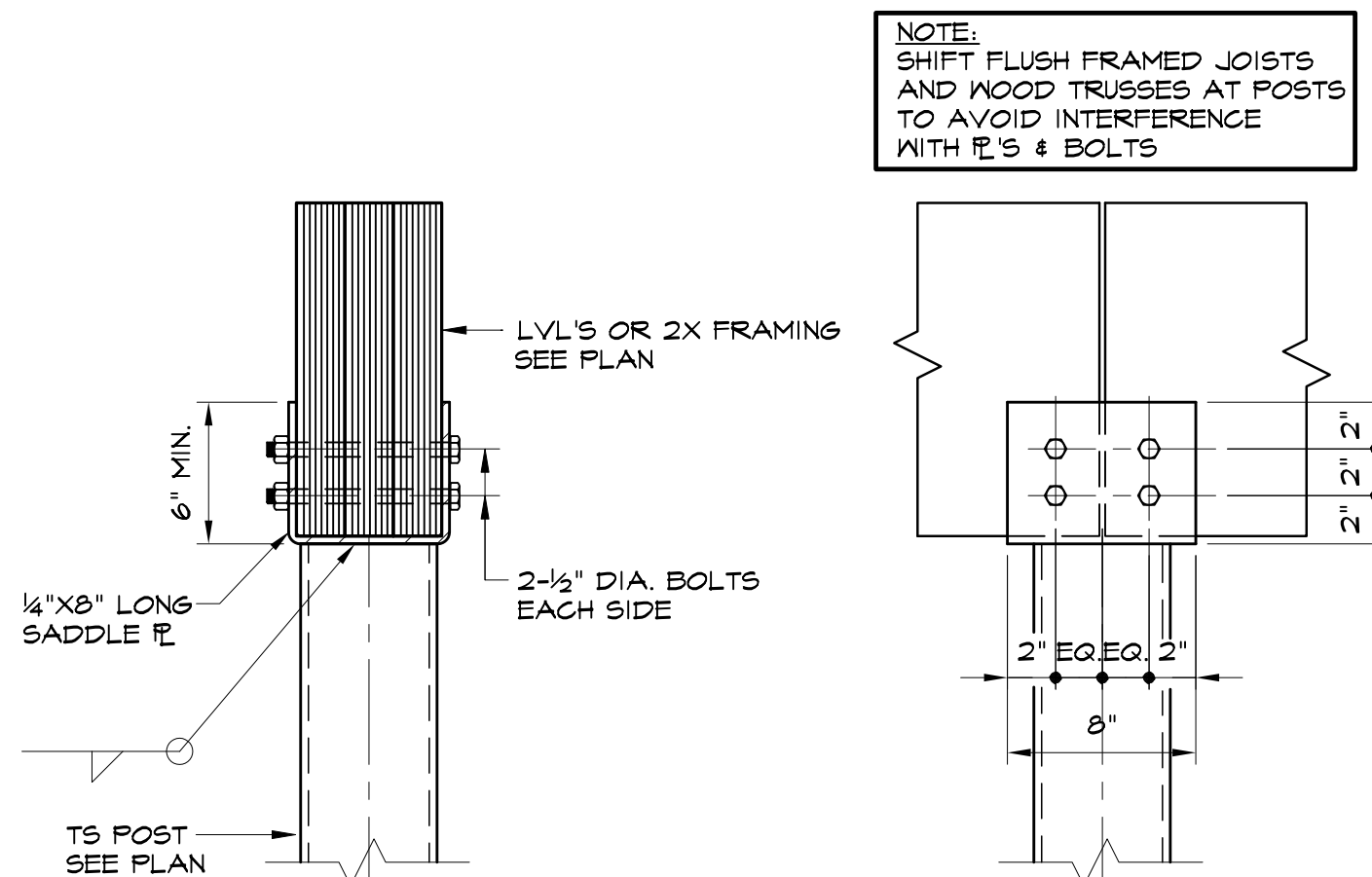
LVL OR 2x HANGER DETAIL



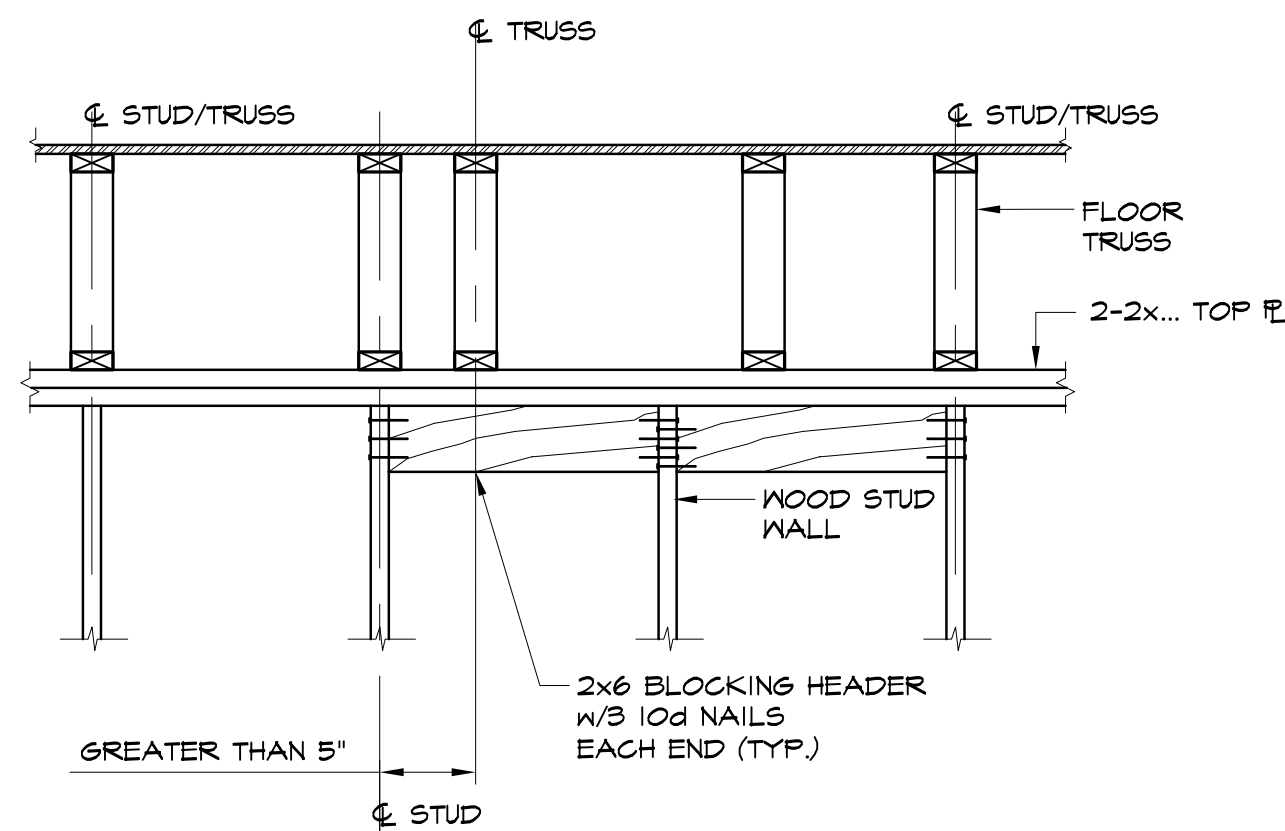
TYPICAL JACK STUD DETAIL



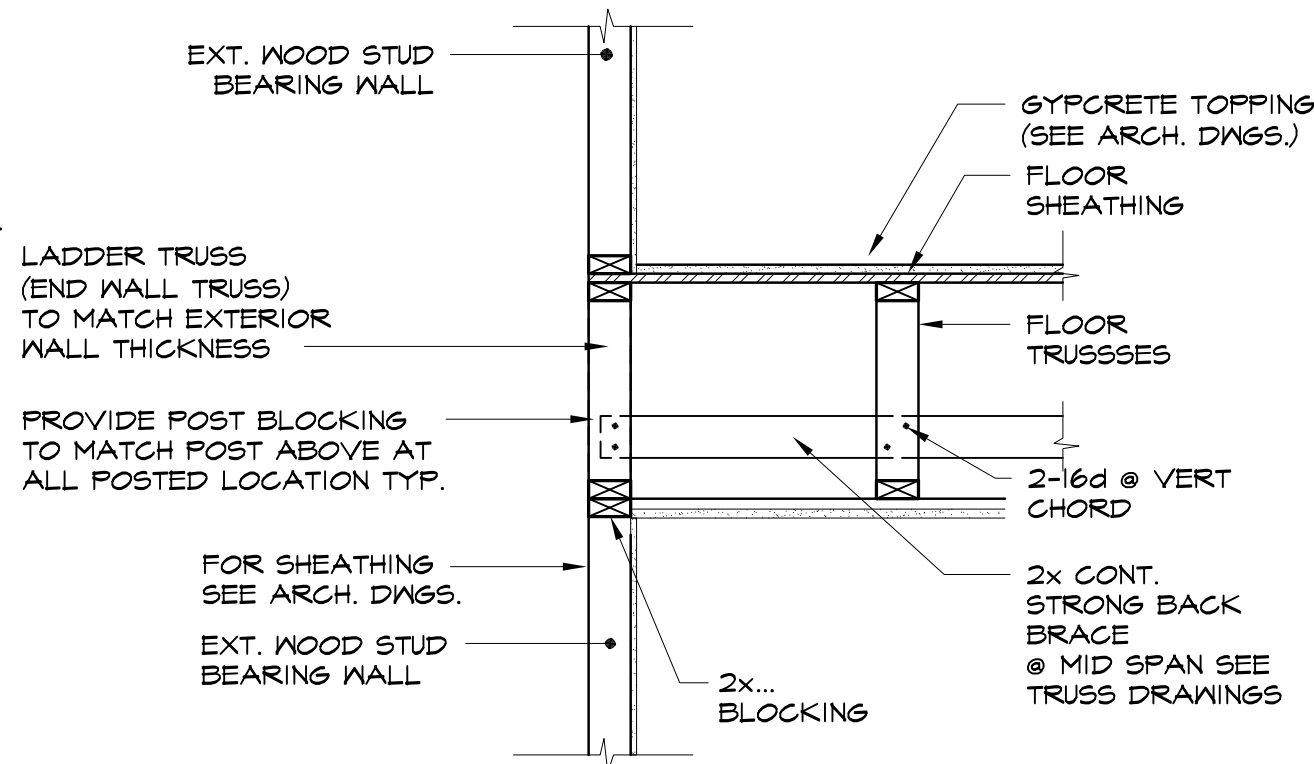
TYPICAL WOOD POST THROUGH
FLOOR TRUSSES AT BEARING WALLS



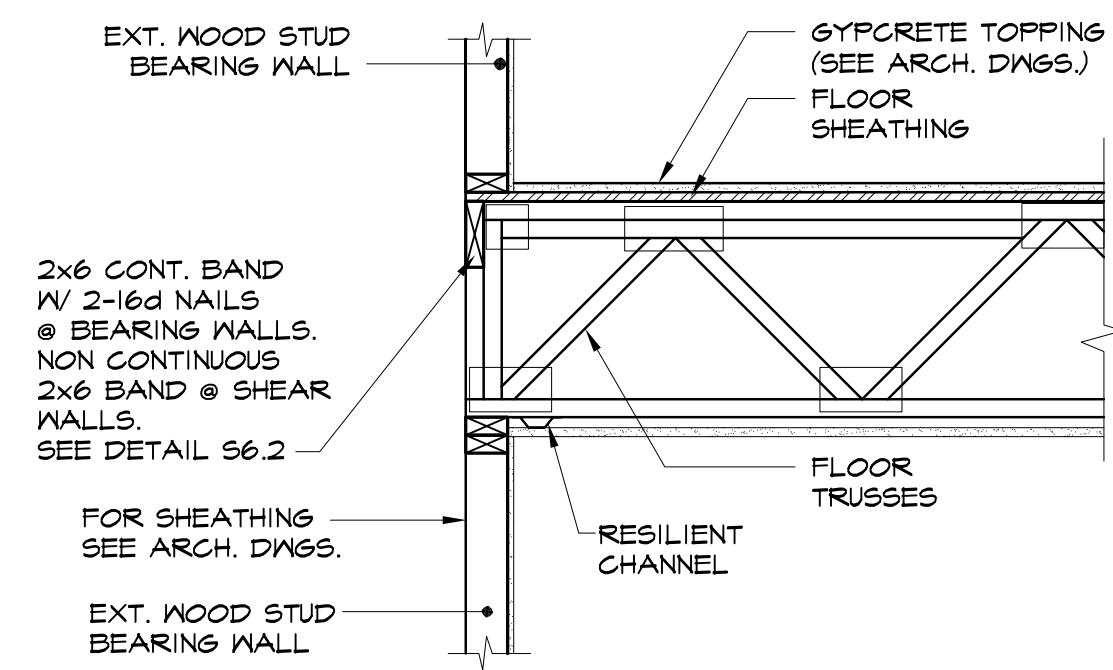
TYPICAL STEEL POST
TO LVL DETAIL



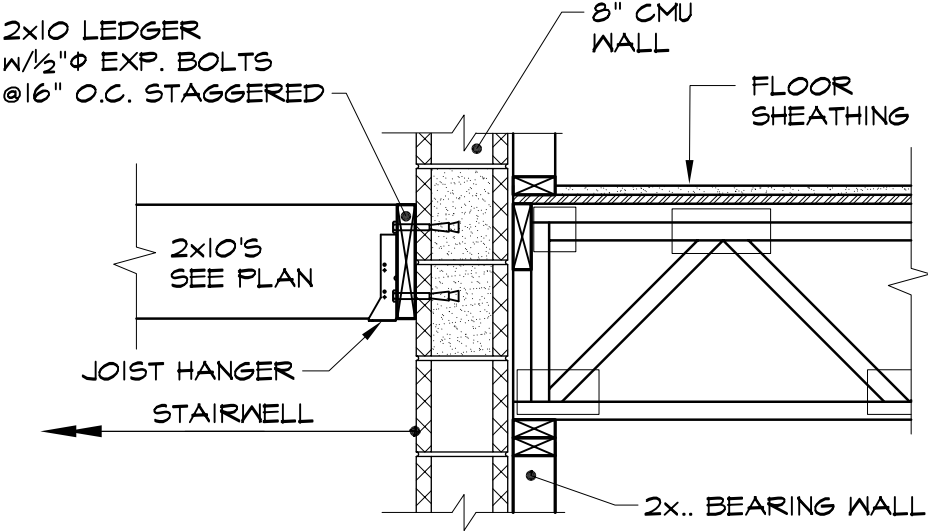
TYPICAL BLOCKING DETAIL
AT MISALIGNED FLOOR TRUSS
OVER 2x4 @ 24" O.C. STUD BEARING WALL



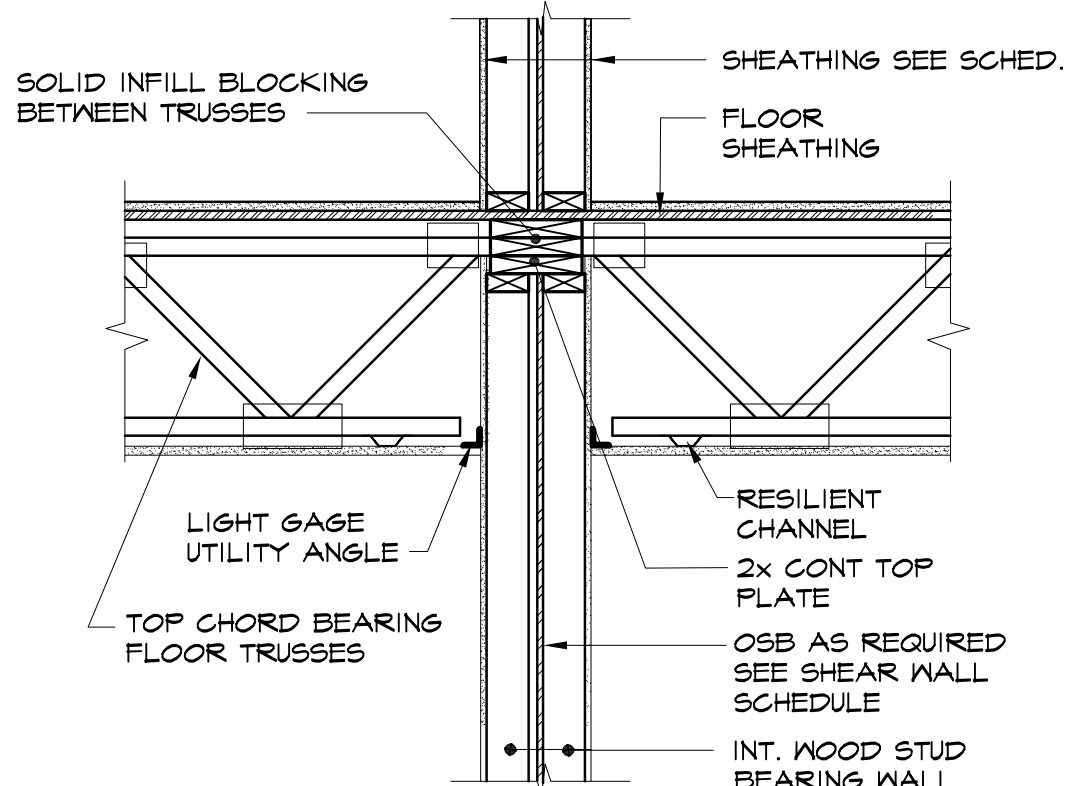
SECTION 1
3/4" = 1'-0"



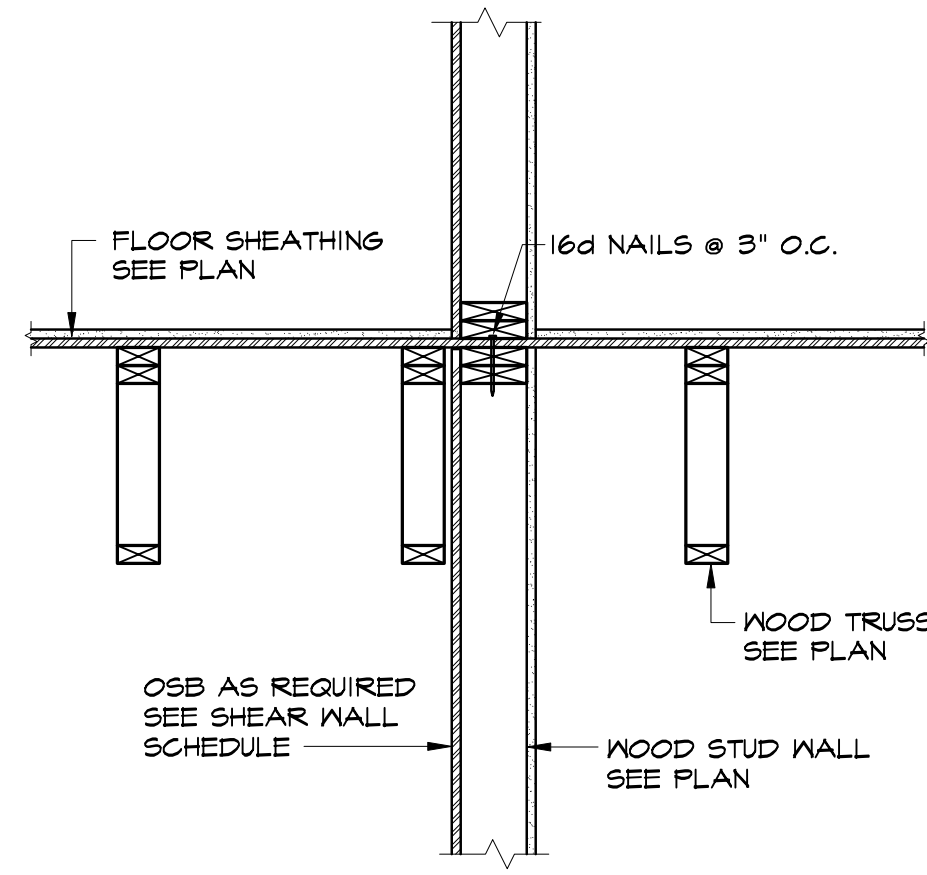
SECTION 2
3/4" = 1'-0"



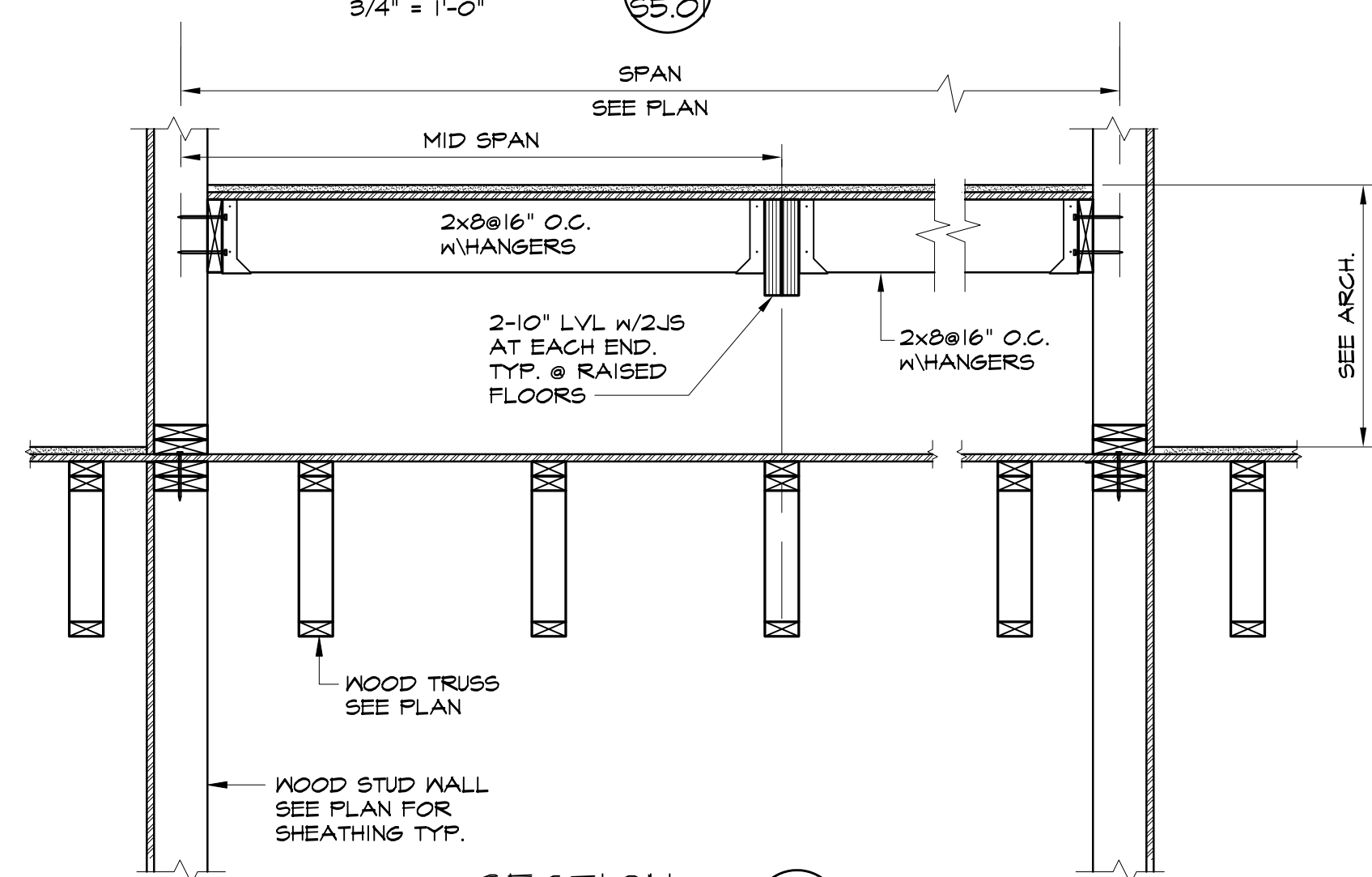
SECTION 3
3/4" = 1'-0"



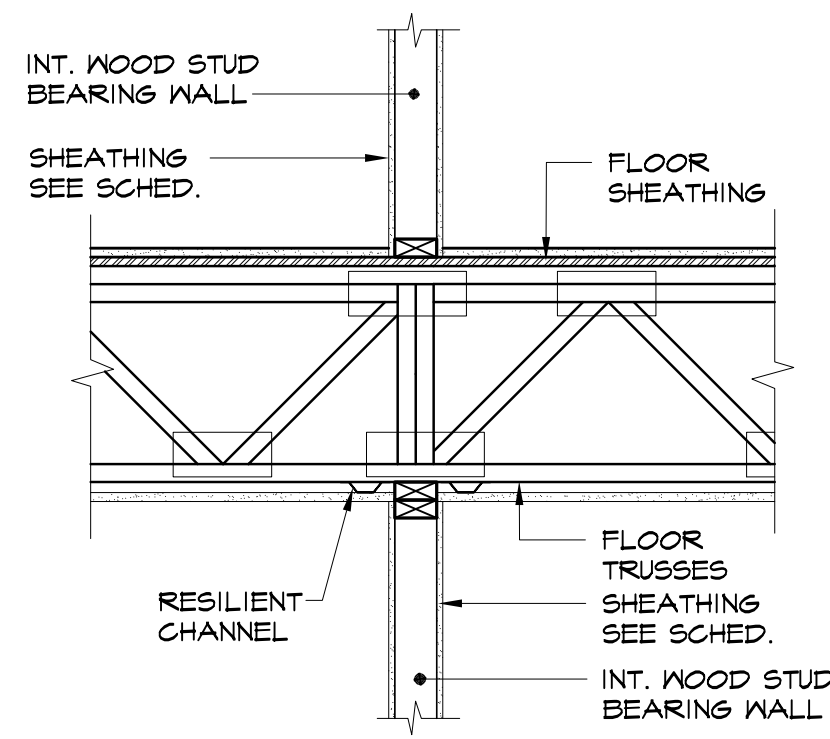
SECTION 4
3/4" = 1'-0"



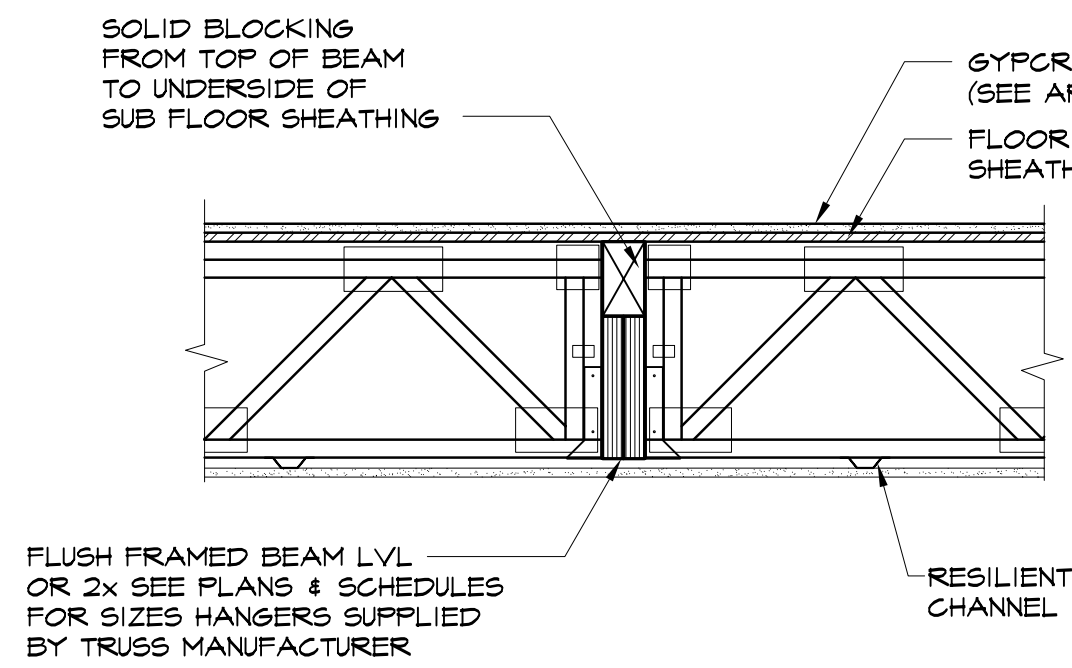
SECTION 5
3/4" = 1'-0"



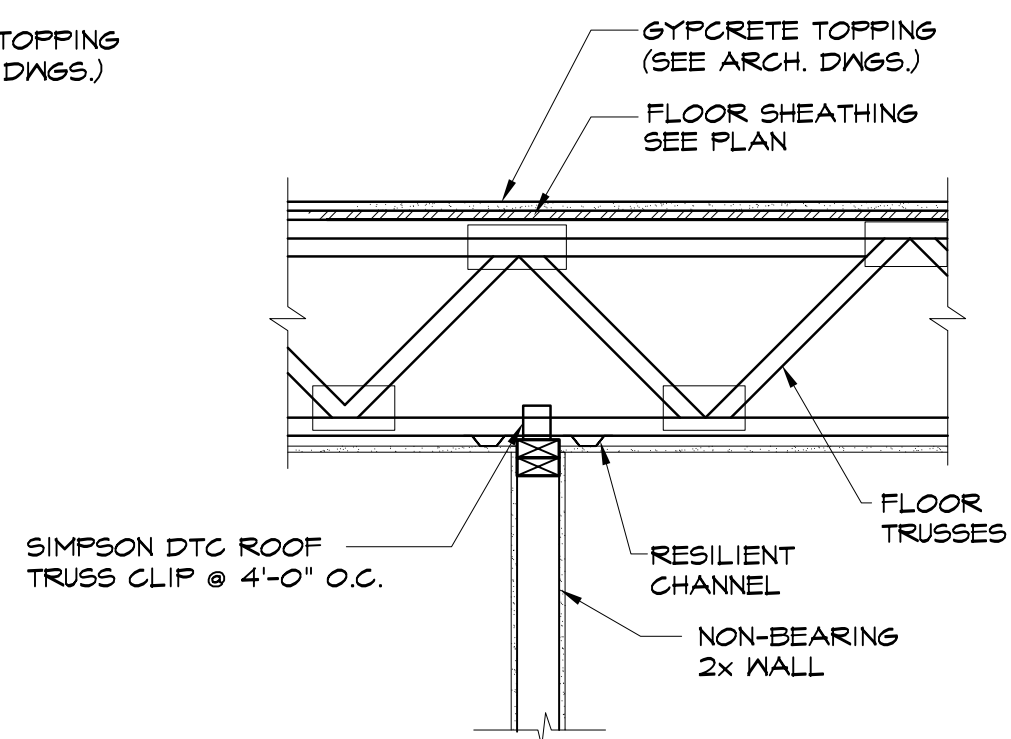
SECTION 6
3/4" = 1'-0"



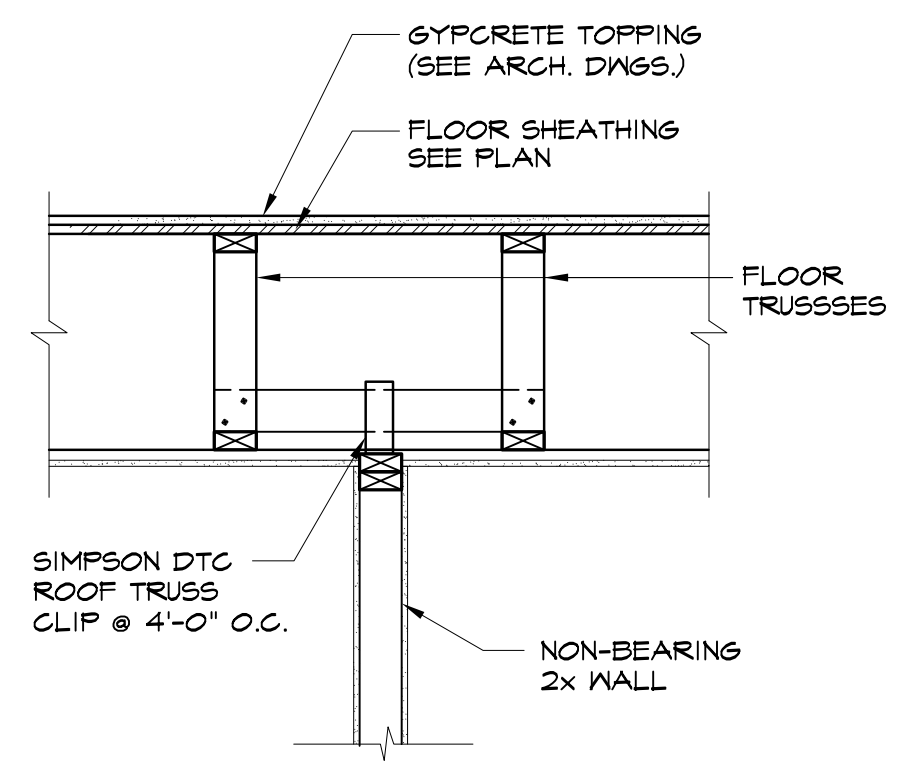
SECTION 7
3/4" = 1'-0"



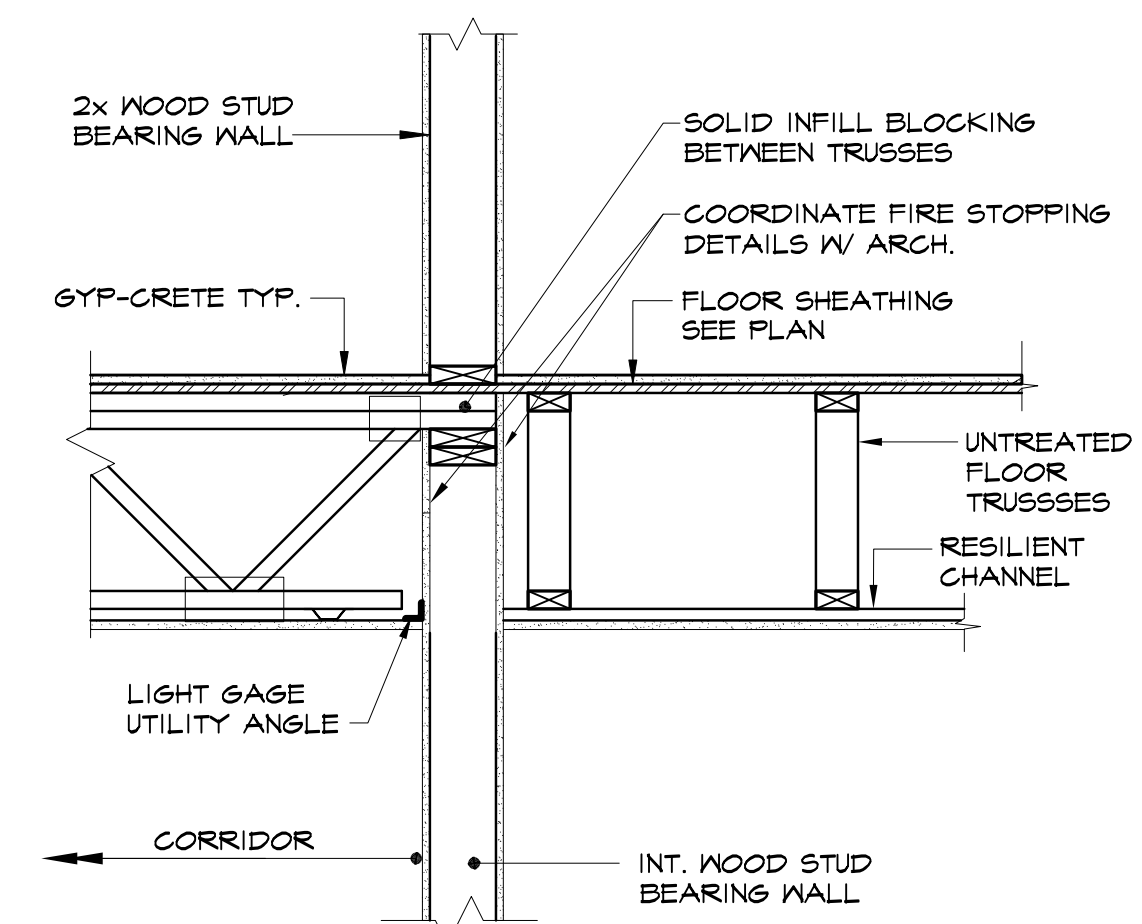
SECTION 8
3/4" = 1'-0"



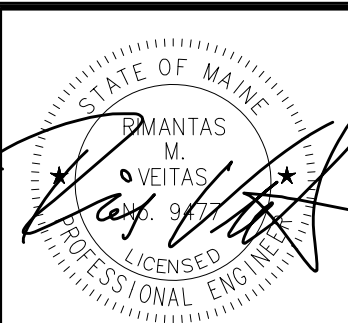
SECTION 9
3/4" = 1'-0"



SECTION 10
3/4" = 1'-0"



SECTION 11
3/4" = 1'-0"



Prepared For:
**118 on Munjoy
Hill, LLC**
118 CONGRESS STREET
PORTLAND, ME 04101

Consultant:
VEITAS VEITAS
engineers
689 Grand Street, Suite 301
Portland, ME 04101
TEL: (207) 772-4056 FAX: (207) 772-4056

Architect:
ARCHITECT
Architects
48 Union Wharf Portland, Maine 04101
(207) 772-6022 Fax (207) 772-4056

Project:
**118 ON MUNJOY
HILL**
118 CONGRESS STREET
PORTLAND, MAINE

Revisions:
**100% CONSTRUCTION
DOCUMENTS**

Scale:
As indicated

Date:
5 MAR 2014

Sections & Details

S5.01